



# Prioritizing the Environment at Project YaREN



**Project YaREN is a proposed low-carbon ammonia production and export facility in Ingleside, Texas**, being developed by joint partners Enbridge and Yara. This project will prioritize employee and community safety, invest in the local economy and create a significant number of jobs in the Ingleside area.

## **A vibrant ecosystem in the Coastal Bend**

Ingleside and the surrounding land and water is home to an incredible diversity of plants, birds, fish and other wildlife. We understand the local community relies on the health of these ecosystems and is invested in their protection. As part of this community, we too are committed to supporting this diversity and will strive to avoid negative impacts on animals and the environment.

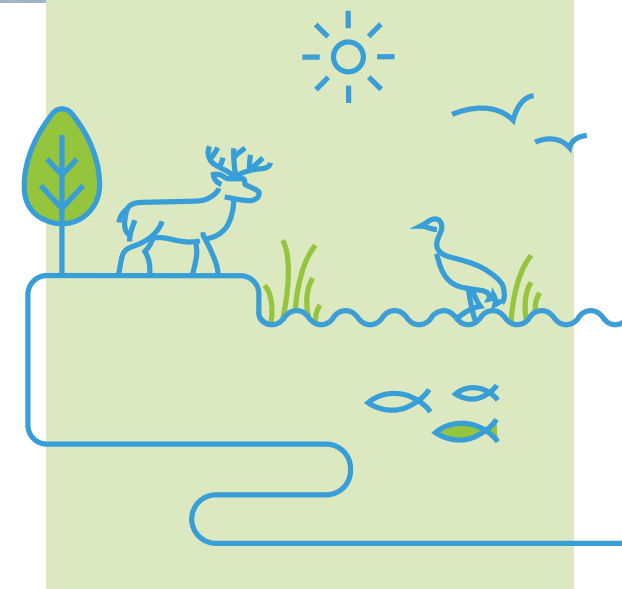
## **A shared commitment**

The partners in Project YaREN share a commitment to protecting our communities and the environment.

**We care deeply about the health and well-being of the people, wildlife and plants we share our land, water and air with.**

## **Project Facts:**

- ✓ Project YaREN will not use freshwater from local municipal systems for plant operations
- ✓ The majority of seawater used will be returned to the bay, all in accordance with stringent standards for protecting marine life and activities in the bay
- ✓ In-water structures have been designed to protect seagrass from erosion
- ✓ Using best engineering and environmental practices, the project will be protective of wildlife and the environment
- ✓ The project will meet or exceed all regulatory standards set by federal and state agencies



## Our commitment to protecting the environment at Project YaREN

### Meeting and exceeding regulatory standards

The facility will operate within the strict air quality, water quality, safety and other environmental standards set by federal and state agencies, including but not limited to the Texas Commission on Environmental Quality (TCEQ), U.S. Environmental Protection Agency (EPA), U.S. Army Corps of Engineers (USACE), U.S. Occupational Health and Safety Administration (OSHA), U.S. Fish and Wildlife Service (USFWS), National Oceanic and Atmospheric Administration (NOAA), and Texas Parks and Wildlife (TPWD), among others.

### Responsible water use

Project YaREN will not use your drinking water in the production process. It will instead use seawater as a source for process water at a few key points in the production process. The majority of this seawater will be returned to the bay, all in accordance with stringent standards for protecting marine life and recreational opportunities in the bay.

### Preventing coastal erosion

To protect seagrass and other aquatic resources, Project YaREN plans to implement engineered diffuser systems for discharges to minimize the velocity of the water as it reenters the bay system. Further, YaREN will strategically position discharge systems in areas that minimize water velocity and scour effects to existing seagrass beds.

### Protecting wildlife habitat

As Project YaREN is being developed at an existing industrial complex at the Enbridge Ingleside Energy Center with best engineering and environmental practices, the project will be protective of wildlife and the environment. Air and water permitting and corresponding discharge dispersion modeling will consider wildlife and human populations in the area.

Marine life protection is also paramount. In-water structures are being designed to meet rigorous environmental standards and will avoid sensitive marine life habitats such as seagrass beds.

### Carbon capture for minimal emissions

The ammonia produced at Project YaREN is known as low-carbon ammonia. The process used to create low-carbon ammonia captures up to 95% of the greenhouse gas emissions created in the process rather than emitting them into the air.

## Enbridge and Yara

Enbridge and Yara's combined complementary strengths will be critical to advancing the project from development to commercial operation. Yara is a global industry leader in ammonia development, production, operations and distribution, while Enbridge has large-scale infrastructure development expertise and world-class deep-water docks and an export platform at the Enbridge Ingleside Energy Center.

We are here to answer your questions and listen to your feedback.



Contact us at **361-461-0995** or email **EIECCommHotline@enbridge.com**  
**projectyaren.com**

